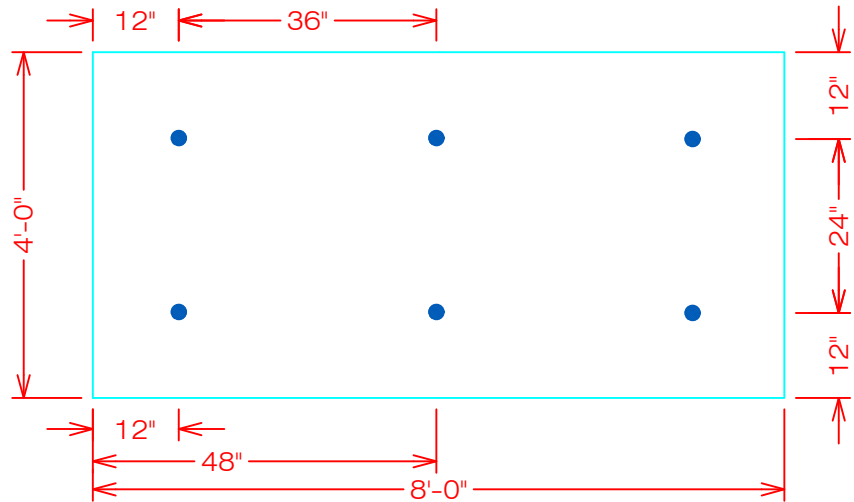
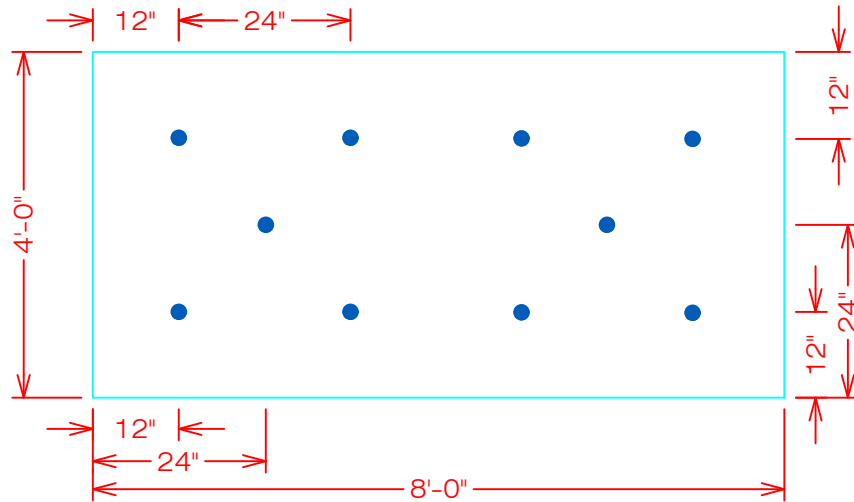


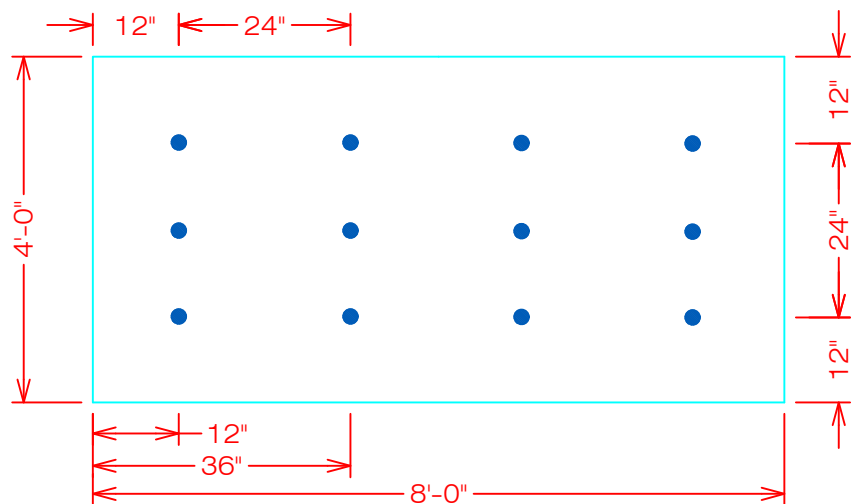
6 FASTENERS PER BOARD



10 FASTENERS PER BOARD



12 FASTENERS PER BOARD



GENERAL REFERENCE:
"FTR GS 01/21"

APPLICABLE SYSTEMS:
"FTR IW 01/21"

INDUCTION WELD ATTACHEMENT METHODS
FTR-ISOWELD CLASS 1-90

REVISES DETAIL	ISSUE DATE	DRAWING NUMBER
ALL PREVIOUS	12-20-22	FTR-IWIA1a