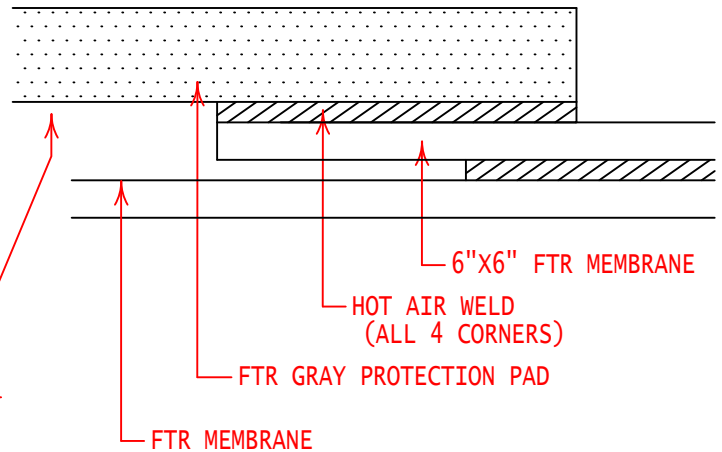


CROSS SECTIONAL VIEW



6" X 6" FTR MEMBRANE
WELDED TO BACK OF
PROTECTION PAD, AND
TO FTR FIELD MEMBRANE
(Typical 4 Corners)

NOTE:
ROLL SIZE - 24" X 48'
CUT TO LENGTH & SHAPE DESIRED



GENERAL REFERENCE:
"FTR GS 01/21"
APPLICABLE SYSTEMS:
"FTR MA 01/21"
"FTR AD 01/21"
"FTR BA 01/21"

FIBERTITE GRAY PROTECTION PAD

REVISES DETAIL	ISSUE DATE	DRAWING NUMBER
ALL PREVIOUS	07-15-21	FTR-DM1a