

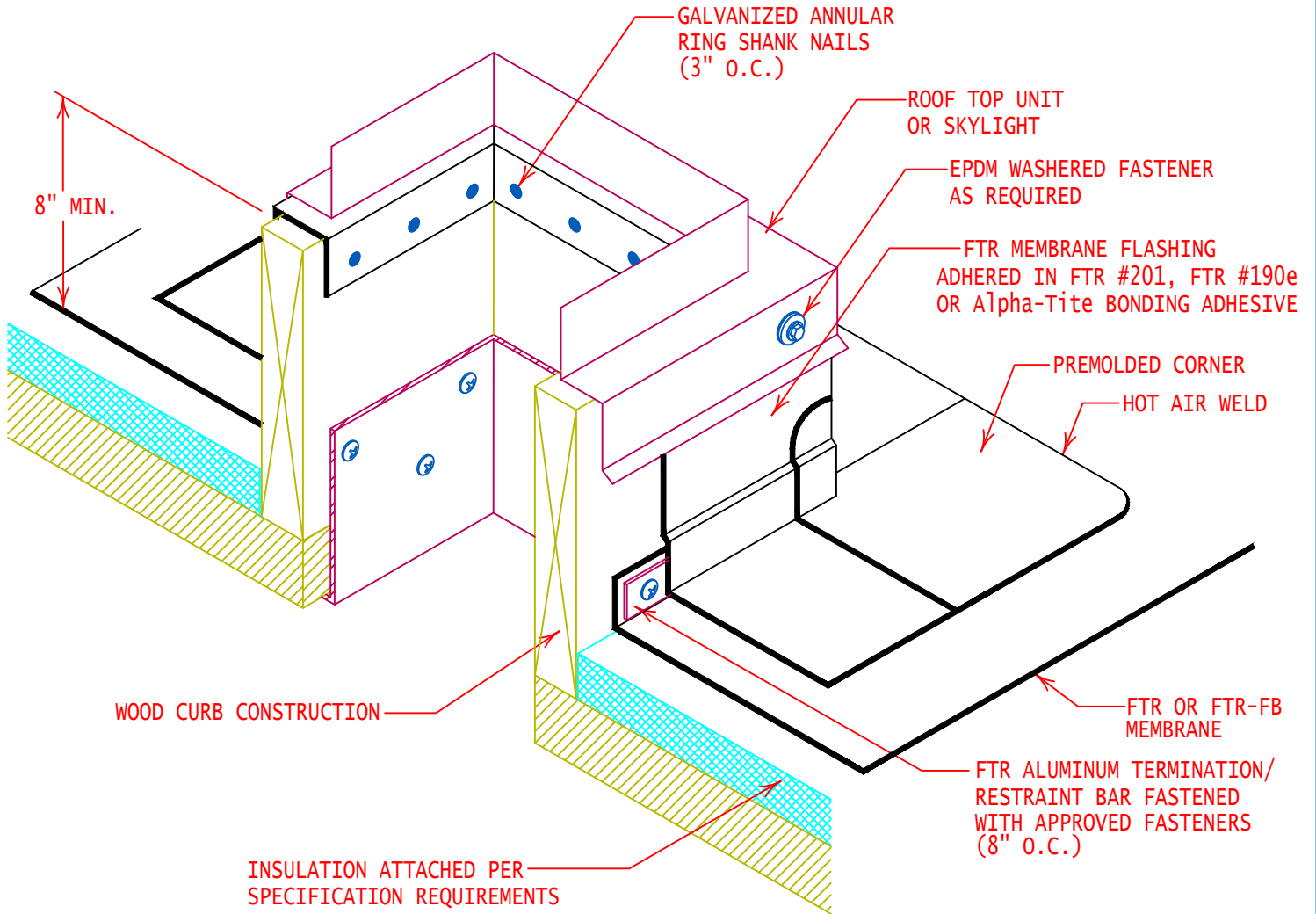
NON-LIFTABLE

FTR #101 SEALANT
BEHIND TOP OF FLASHING

MECHANICAL UNIT

METAL COUNTERFLASHING, FASTEN W/
EPDM WASHERED FASTENERS (12" O.C.)

FTR MEMBRANE FLASHING (FULLY ADHERED)



GENERAL REFERENCE:
"FTR GS 01/21"
APPLICABLE SYSTEMS:
"FTR MA 01/21"
"FTR AD 01/21"
"FTR BA 01/21"

TYPICAL WOOD OR SKYLIGHT CURB FLASHING
(BLOCKING ALTERNATE) T-BAR RESTRAINT

REVISES DETAIL
ALL PREVIOUS

ISSUE DATE
02-23-21

DRAWING NUMBER
FTR-DP1ai