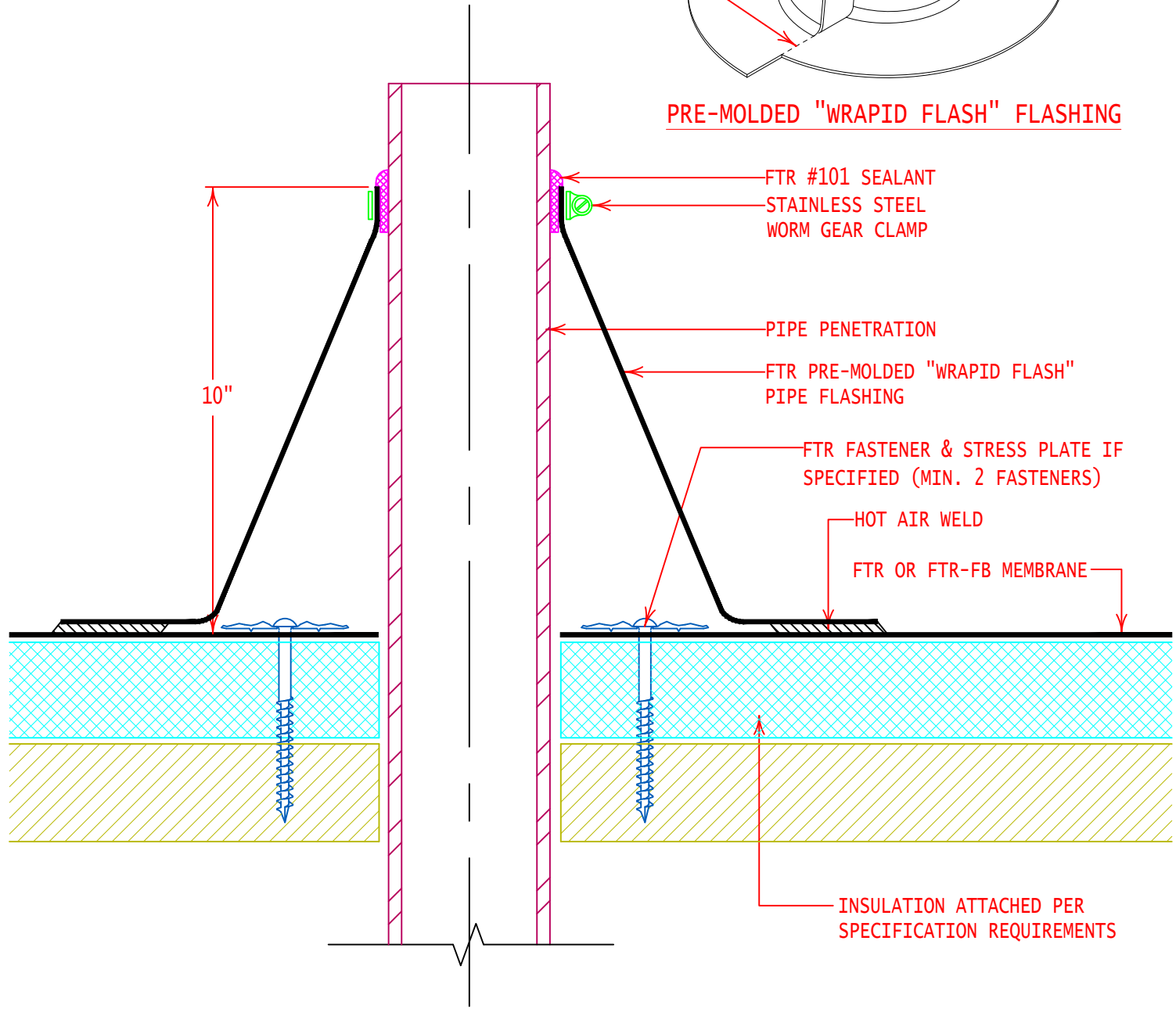


NOTE: CUT MOLDED TOP OFF AND CUT BOTTOM FLANGE WHERE MOLDED PRIOR TO TIGHTLY WRAPPING AND FLASHING PENETRATION. HOT-AIR WELD WRAPPED SEAM AND BOTTOM FLANGE TO MEMBRANE.

PRE-MOLDED "WRAPID FLASH" FLASHING



GENERAL REFERENCE:
 "FTR GS 01/21"
 APPLICABLE SYSTEMS:
 "FTR MA 01/21"
 "FTR AD 01/21"
 "FTR BA 01/21"

PRE-MOLDED "WRAPID FLASH" PIPE PENETRATION FLASHING		
REVISES DETAIL	ISSUE DATE	DRAWING NUMBER
ALL PREVIOUS	02-23-21	FTR-DP12