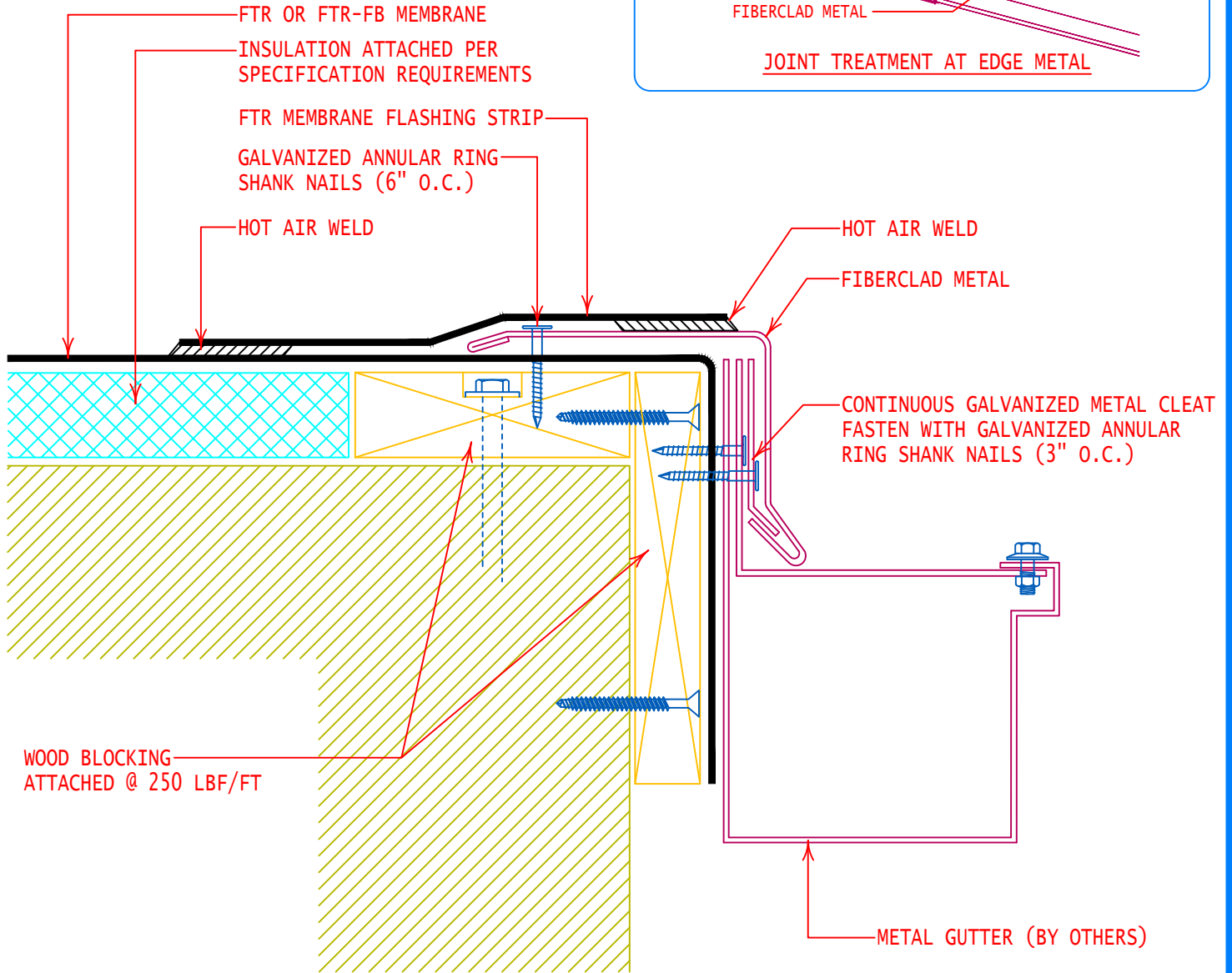
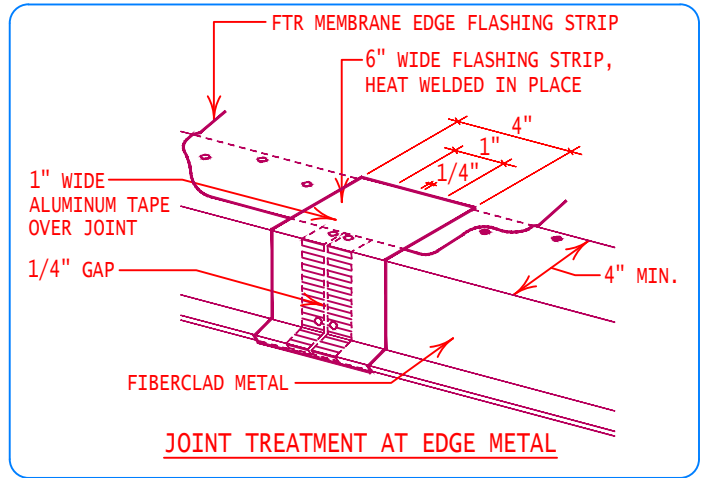


NOTE: JOINING OF EDGE METAL PIECES

1. INSTALL METAL CORRECTLY
2. APPLY 1" WIDE ALUMINUM TAPE OVER JOINT GAP
3. WELD IN MEMBRANE EDGE FLASHING STRIP ONTO METAL AND THE ROOF MEMBRANE.
4. WELD IN 4-6" WIDE FLASHING STRIP OVER TAPE COVERED JOINT GAP ON THE EDGE FLASHING STRIP



GENERAL REFERENCE:
"FTR GS 01/21"

APPLICABLE SYSTEMS:
"FTR MA 01/21"
"FTR AD 01/21"

GUTTER FLASHING

REVISES DETAIL
ALL PREVIOUS

ISSUE DATE
02-10-14

DRAWING NUMBER
FTR-DE3