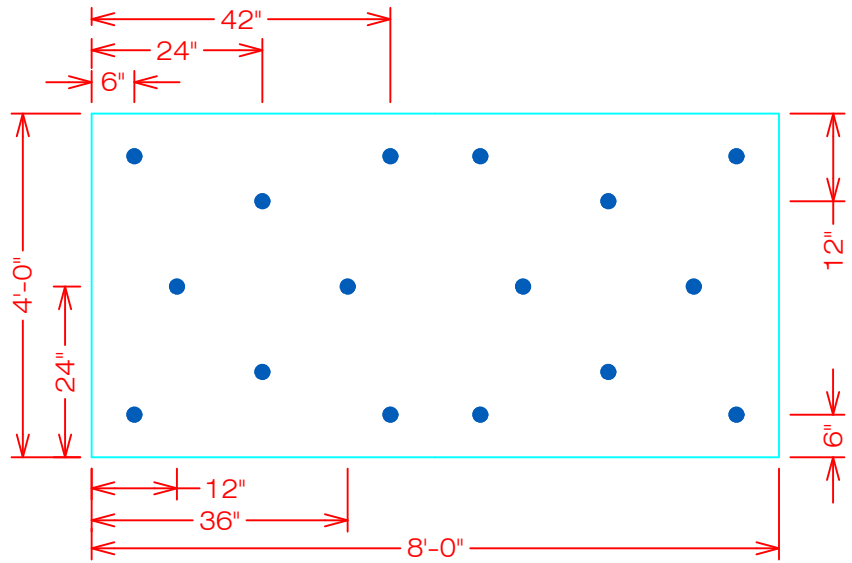
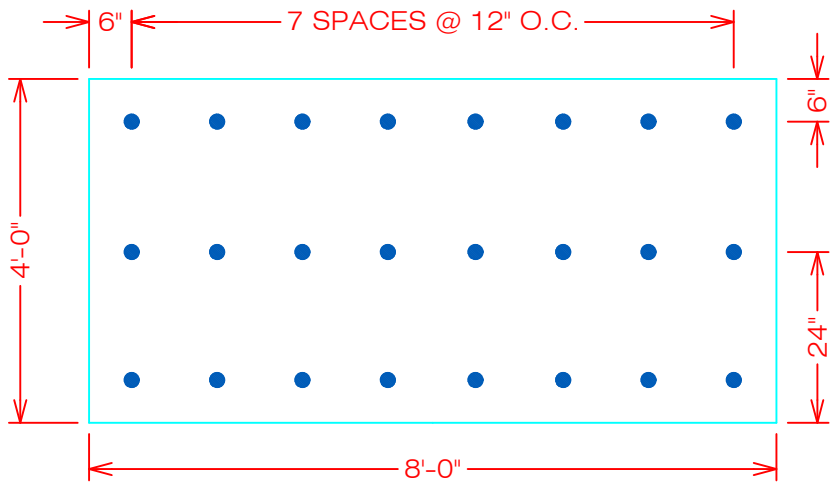


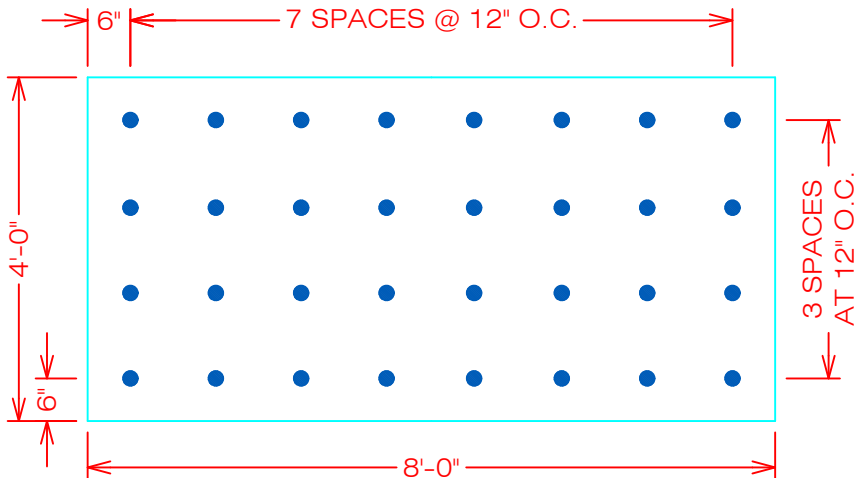
16 FASTENERS PER BOARD



24 FASTENERS PER BOARD



32 FASTENERS PER BOARD



GENERAL REFERENCE:  
"FTR GS 01/21"

APPLICABLE SYSTEMS:  
"FTR AD 01/21"

INSULATION/COVERBOARD  
ATTACHMENT PATTERN

REVISES DETAIL  
ALL PREVIOUS

ISSUE DATE  
08-15-17

DRAWING NUMBER  
FTR-DI6