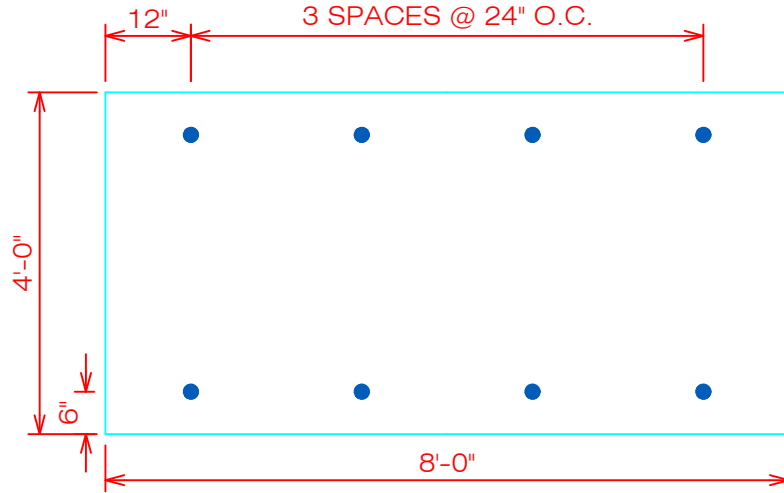
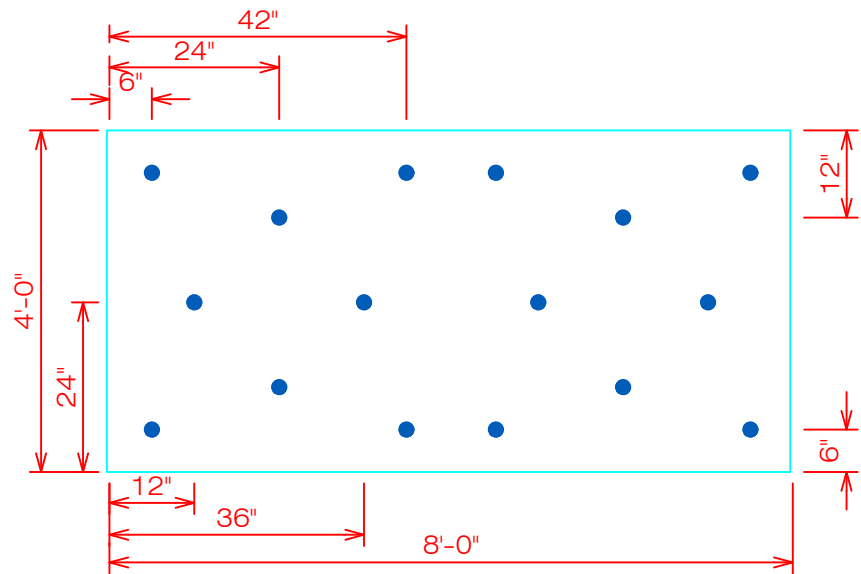


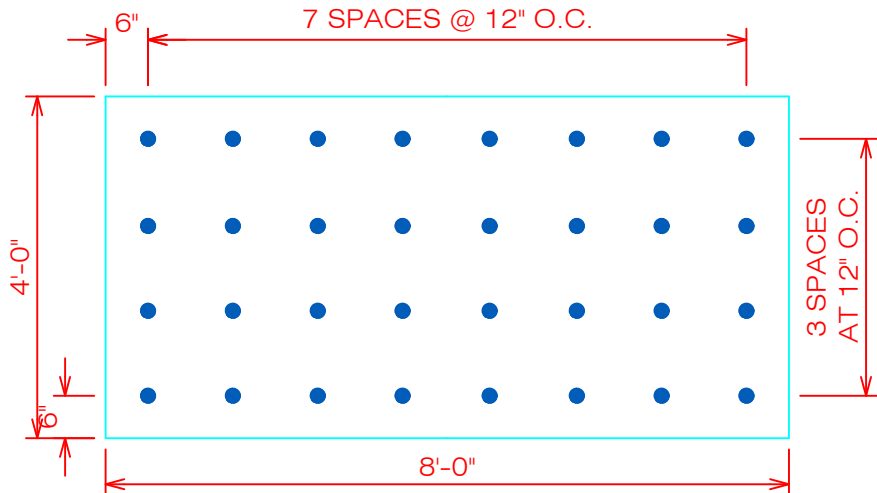
8 FASTENERS PER BOARD



16 FASTENERS PER BOARD



32 FASTENERS PER BOARD



GENERAL REFERENCE:  
"FTR GS 01/21"  
APPLICABLE SYSTEMS:  
"FTR AD 01/21"

ADHERED SYSTEM (1-90 ATTACHMENT) MECHANICALLY ATTACHED INSULATION INSULATION THICKNESS 2.0" OR GREATER		
REVISES DETAIL	ISSUE DATE	DRAWING NUMBER
ALL PREVIOUS	03-24-22	FTR-DI2a